



夹紧气缸 CPR50/63 Pneumatic clamp CPR50/63

主要特点:

- 铁质外壳
- 曲柄连杆机构
- 打开角度容易调整
- 顶部检测销检测最终位置
- 外部夹臂硬限位
- 多种夹臂可选 VC 和 OC
- 4 个安装面 (前后左右)
- 2 个不同的缸径可选: 50 和 63 mm
- 4 个 G1/4" 进气口
- 电感式接近开关 (M12x1 接口)
- 带手动机构可选

Main characteristics:

- Steel flanks
- Toggle action mechanism
- Opening angle easily adjustable
- Checking pin for verifying the end position
- External Arm hard stop
- Versatile steel arms VC and OC
- 4 mounting areas (front, back, on the sides)
- 2 different pneumatic cylinder bores: 50 and 63 mm
- 4 feeding ports G1/4"
- Inductive proximity switch (connection M12x1)



[PDF](#)



[3D Step](#)



[WEB](#)

索引. Index.

页码 Page	描述 Description		
1	主要特点 / Main characteristics		
2	订货举例 / Ordering example		
3	尺寸页码 Dimensional page	C50-V1	
4		C50-O1	
5		CS50-V1	
6		CS50-O1	
7		C63-V1	
8		C63-O1	
9		CS63-V1	
10		CS63-O1	
11		CM50/63-V1	
12		CM50/63-O1	
13		CSM50/63-V1	
14		CSM50/63-O1	
15-16		图表 / Diagrams	
17		电感式接近开关图表 / 气路图 Diagram for inductive proximity switch / Pneumatic plan	
18-19	操作说明 Operating instructions	打开角度调整 Opening angle change	
		手动机构位置调整 Position change hand lever	
20-21	附件 Accessories	维修包 Fixing blocks	
		防掉落组件 Lever lathing group	
22	备件 / Spare parts		
23	备注 / Notes		



订货举例.

Ordering example.

C50 - LA - V1C - I - 105

类型及气缸缸径:
Model and cylinder bore

C50
标准夹紧气缸 CPR
standard clamp CPR

CM50
标准夹紧气缸 CPRM
standard clamp CPRM

CS50
标准夹紧气缸, 夹臂反装 (缸径 50 mm)
standard clamp with reverse arm
(cylinder bore 50 mm)

C63
标准夹紧气缸 CPR
standard clamp CPR

CM63
标准夹紧气缸 CPRM
standard clamp CPRM

CS63
标准夹紧气缸, 夹臂反装
(缸径 63 mm)
standard clamp with reverse clamp
(cylinder bore 63 mm)



接近开关:
Proximity switch:

X: 不带接近开关
without proximity switch

I: P+F 电感式接近开关
inductive proximity switch P+F



可调节打开角度:
Adjustable opening angle:

V1X	15°	30°	45°	60°	75°	90°	105°	120°
O1X	15°	30°	45°	60°	75°	90°	105°	---
V1XS	15°	---	---	---	---	---	---	---
O1XS	15°	30°	45°	60°	---	---	---	---

夹臂类型:
Type of arm:

XXX: 无夹臂
without arm

V1C, V1D 和 V1S (详见第 3 页)
V1C, V1D and V1S (see page 3)

O1C, O1D 和 O1S (详见第 4 页)
O1C, O1D e O1S (see page 4)

V1CS, V1DS 和 V1SS (详见第 5 页)
V1CS, V1DS e V1SS (see page 5)

O1CS, O1DS 和 O1SS (详见第 6 页)
O1CS, O1DS e O1SS (see page 5)

备注.: 可以通过调整夹臂的安装方向把夹臂 VC 成 OC
NOTE: It's possible to transform the clamp type VC into the type OC simply changing the arm position.



手动机构位置
Hand lever position:

LX: 配置手柄
arrangement lever

LA: 手柄在左侧
left lever

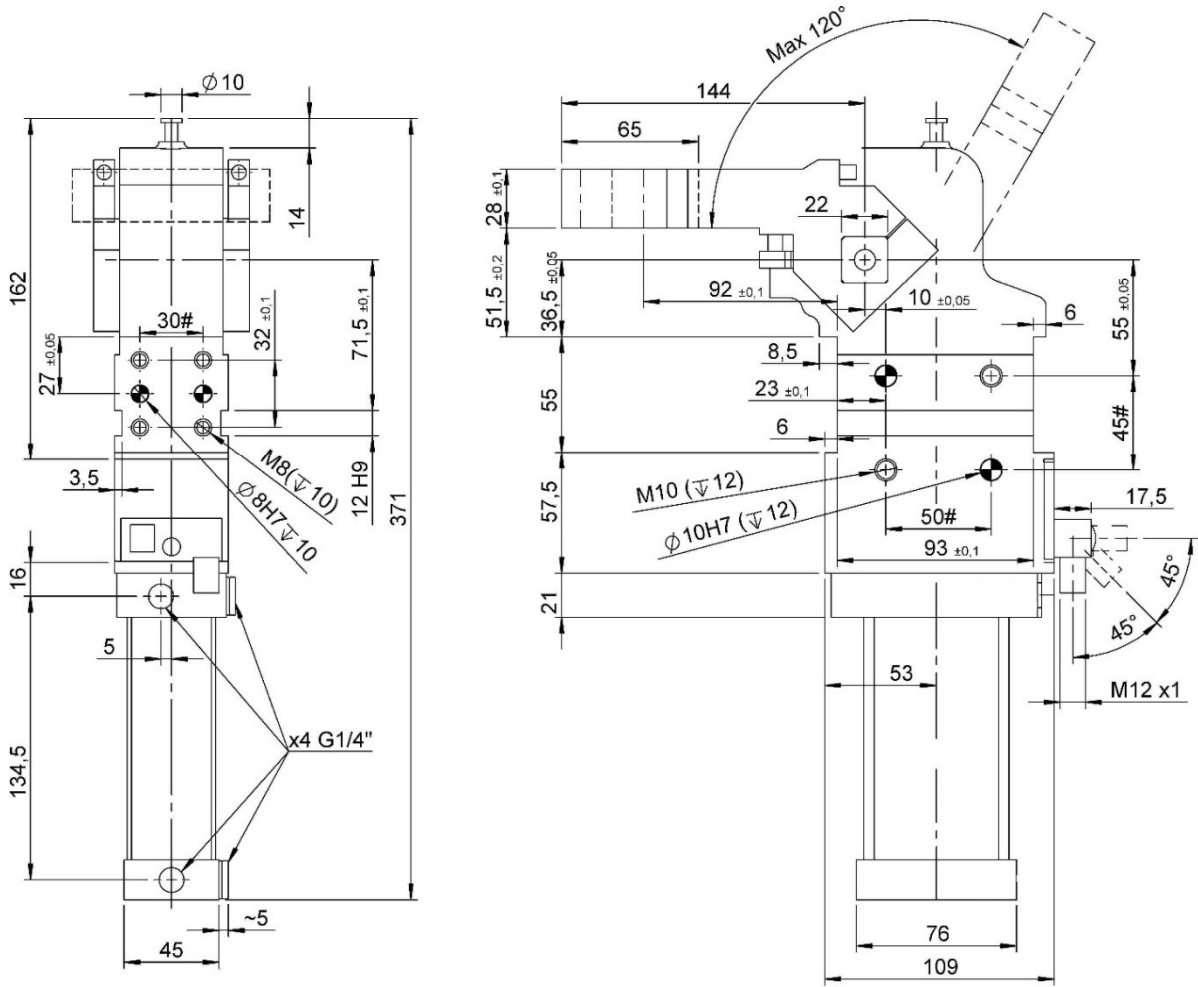
LB: 手柄在右侧
right lever





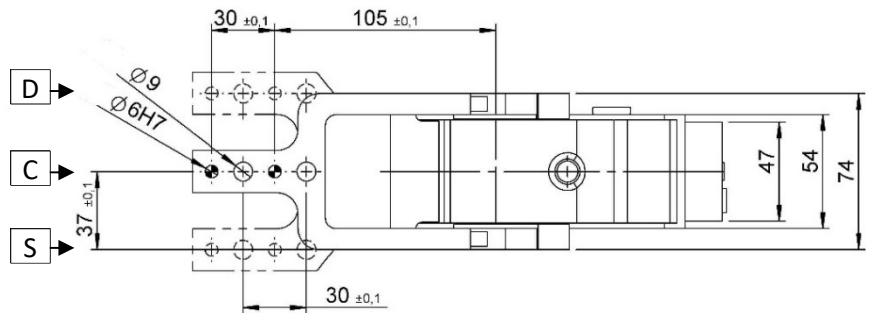
C50-V1...

夹紧气缸, D.50, 打开角度可调, 夹臂垂直安装, 夹臂高度 15mm
Clamp, D.50, Vario Op. Angle, Vertical arm, Offset 15



标准打开角度=120°，打开角度可以
15°调整。

Standard opening angle = 120°, it's
possible to set a lower angles with
steps of 15°.



#公差: 定位销孔 ± 0.02 , 螺纹孔 ± 0.1

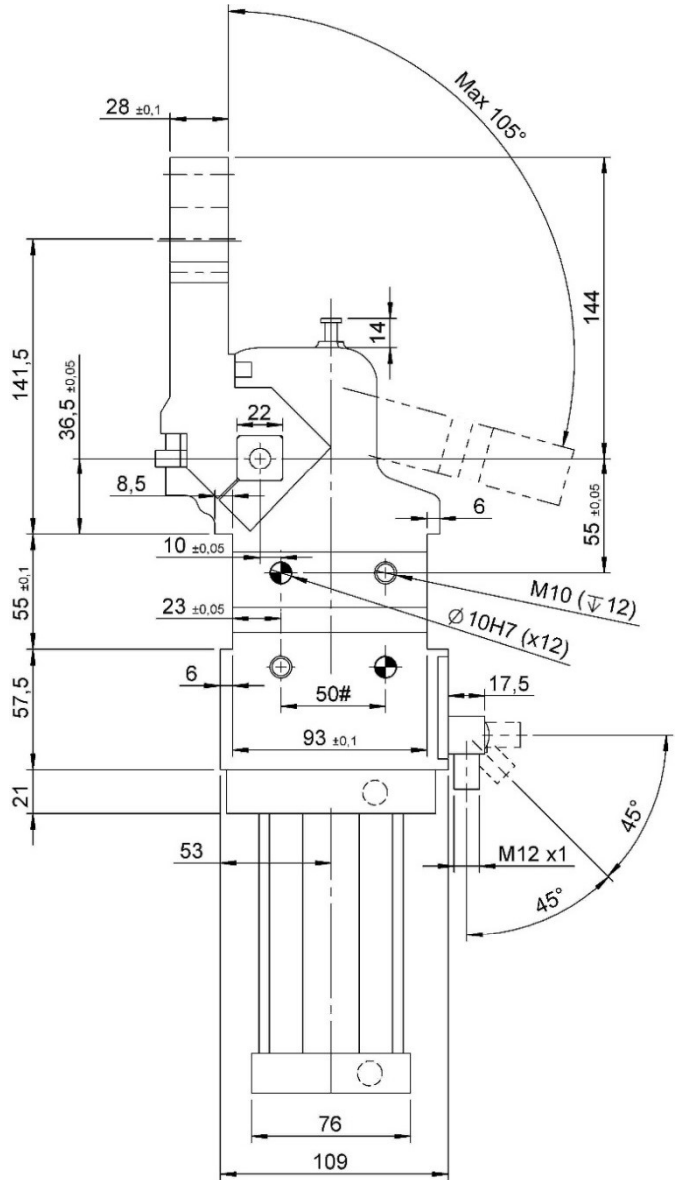
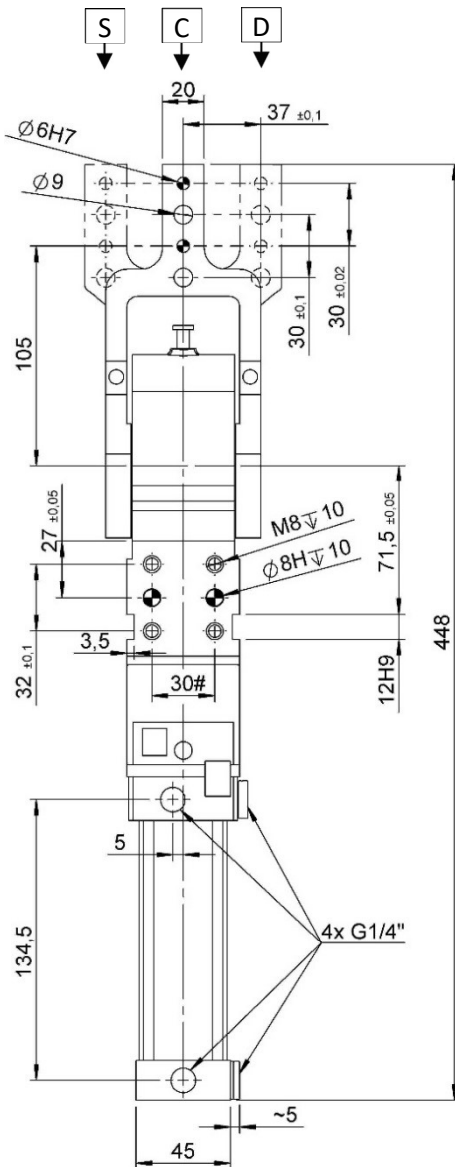
Tolerances: dowel holes ± 0.02 , screw holes ± 0.1

类型 Type	气缸缸径 Cylinder bore	保持力 Holding moment	重量 Weight	工作气压 Working pressure	最大夹紧扭矩 (5 bar) Clamping max. torque (5 bar)	空气耗气量 (5 bar) Air consumption (5 bar)
	[mm]	[Nm]	[Kg]	[bar]	[Nm]	[l]
C50-V1...	50	1000	~ 5,0	2-8	270	~ 1,9



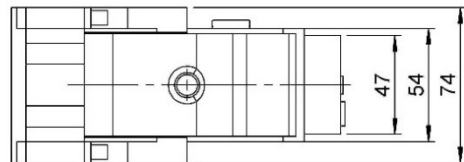
C50-O1...

夹紧气缸, D.50, 打开角度可调, 夹臂水平安装, 高度 15mm
 Clamp, D.50, Vario Op. Angle, Horizontal arm, Offset 15



标准打开角度 = 105° 打开角度可以每 15° 调整.

Standard opening angle = 105°, it's possible to set a lower angles with steps of 15°.



#公差: 定位销孔 ±0.02, 螺纹孔 ±0.1

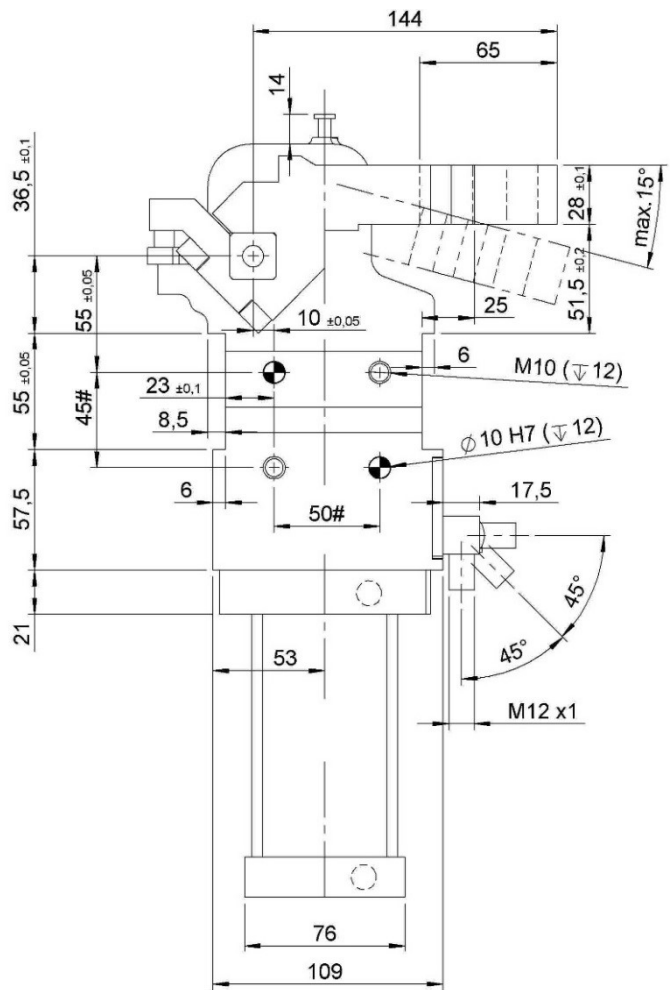
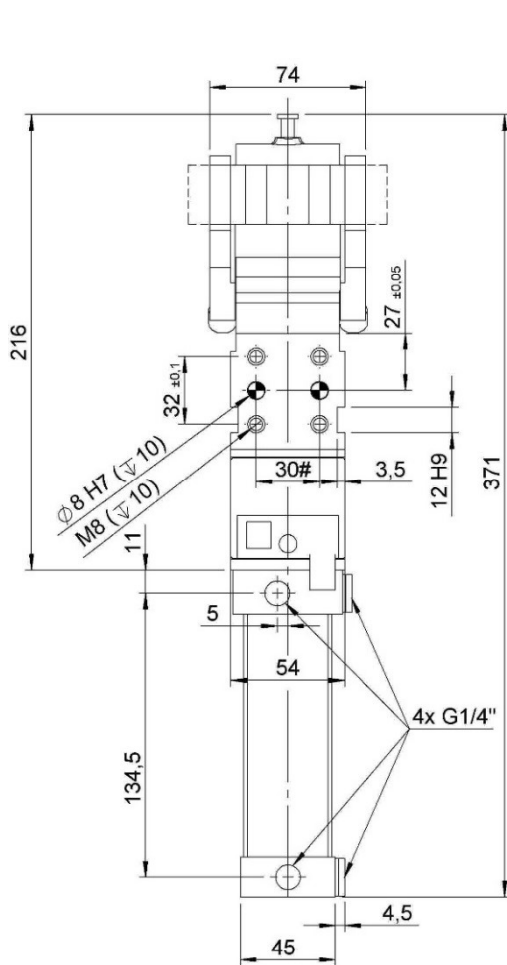
#Tolerances: dowel holes ±0.02, screw holes ±0.1

类型 Type	气缸缸径 Cylinder bore	保持力 Holding moment	重量 Weight	工作气压 Working pressure	最大夹紧扭矩 (5 bar) Clamping max. torque (5 bar)	空气耗气量 (5 bar) Air consumption (5 bar)
	[mm]	[Nm]	[Kg]	[bar]	[Nm]	[l]
C50-O1...	50	1000	~ 5	2-8	270	~ 1,9



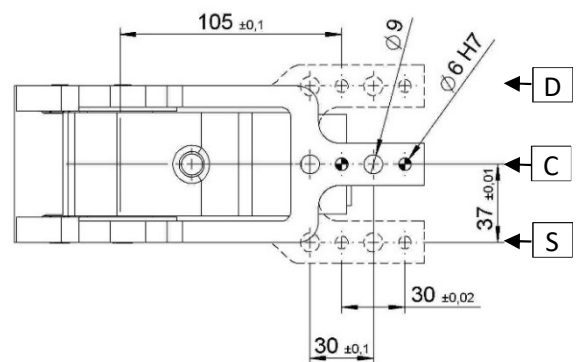
CS50-V1...

夹紧气缸, D.50, 打开角度可调, 夹臂垂直对称安装, 高度 15mm
Clamp, D.50, Vario Op. Angle, Vertical symmetric arm, Offset 15



固定打开角度 = 15°.

Fixed opening angle = 15°.



公差: 定位销孔: ± 0.02 螺纹孔: ± 0.1

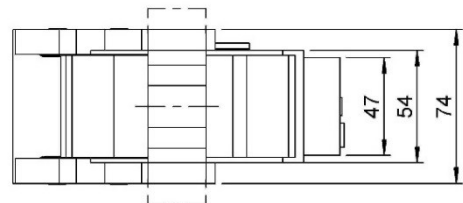
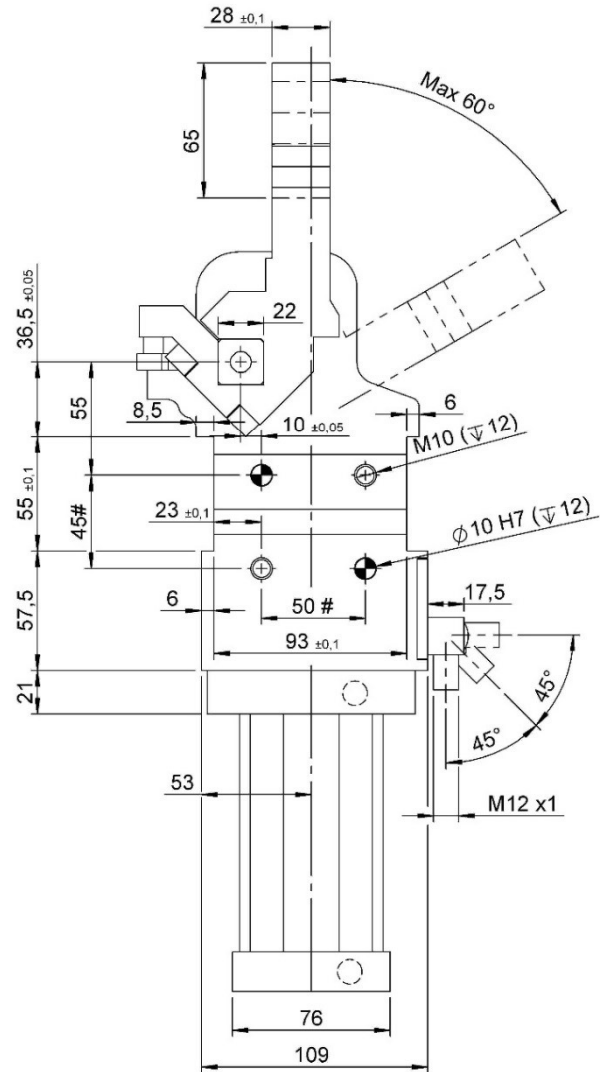
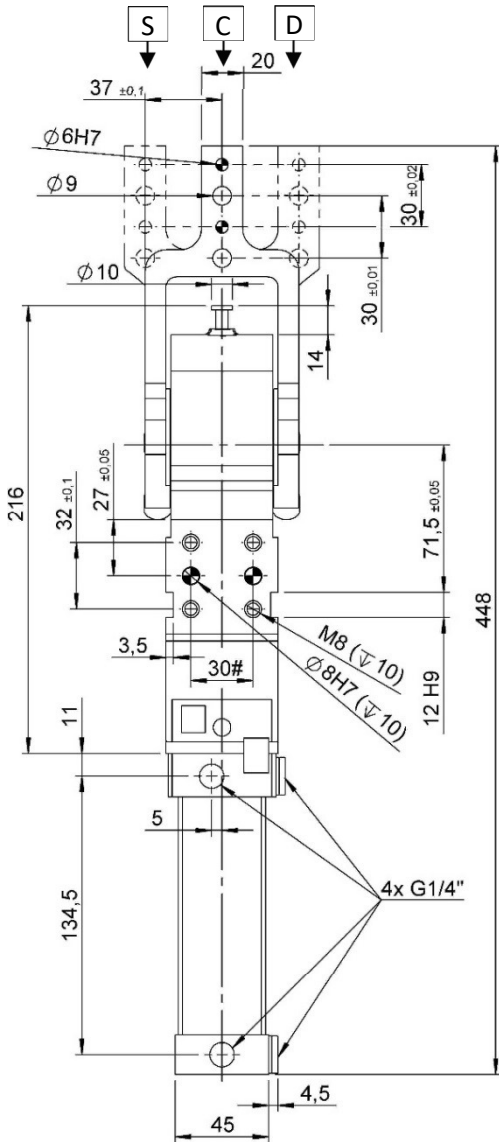
#Tolerances: dowel holes: ± 0.02 | screw holes: ± 0.1

类型 Type	气缸缸径 Cylinder bore	保持力 Holding moment	重量 Weight	工作气压 Working pressure	最大夹紧扭矩 (5 bar) Clamping max. torque (5 bar)	空气耗气量 (5 bar) Air consumption (5 bar)
	[mm]	[Nm]	[Kg]	[bar]	[Nm]	[l]
CS50-V1...	50	1000	~ 5	2-8	270	3



CS50-O1...

夹紧气缸, D.50, 打开角度可调, 15 夹臂水平对称安装, 高度 15mm
 Clamp, D.50, Vario Op. Angle, Horizontal symmetric arm, Offset 15



标准打开角度 = 60°, 其他小角度可以做 15°调整。

Standard opening angle = 60°, it's possible to set a lower angles with steps of 15°.

#公差: 定位销孔 ±0.02, 螺纹孔 ±0.1

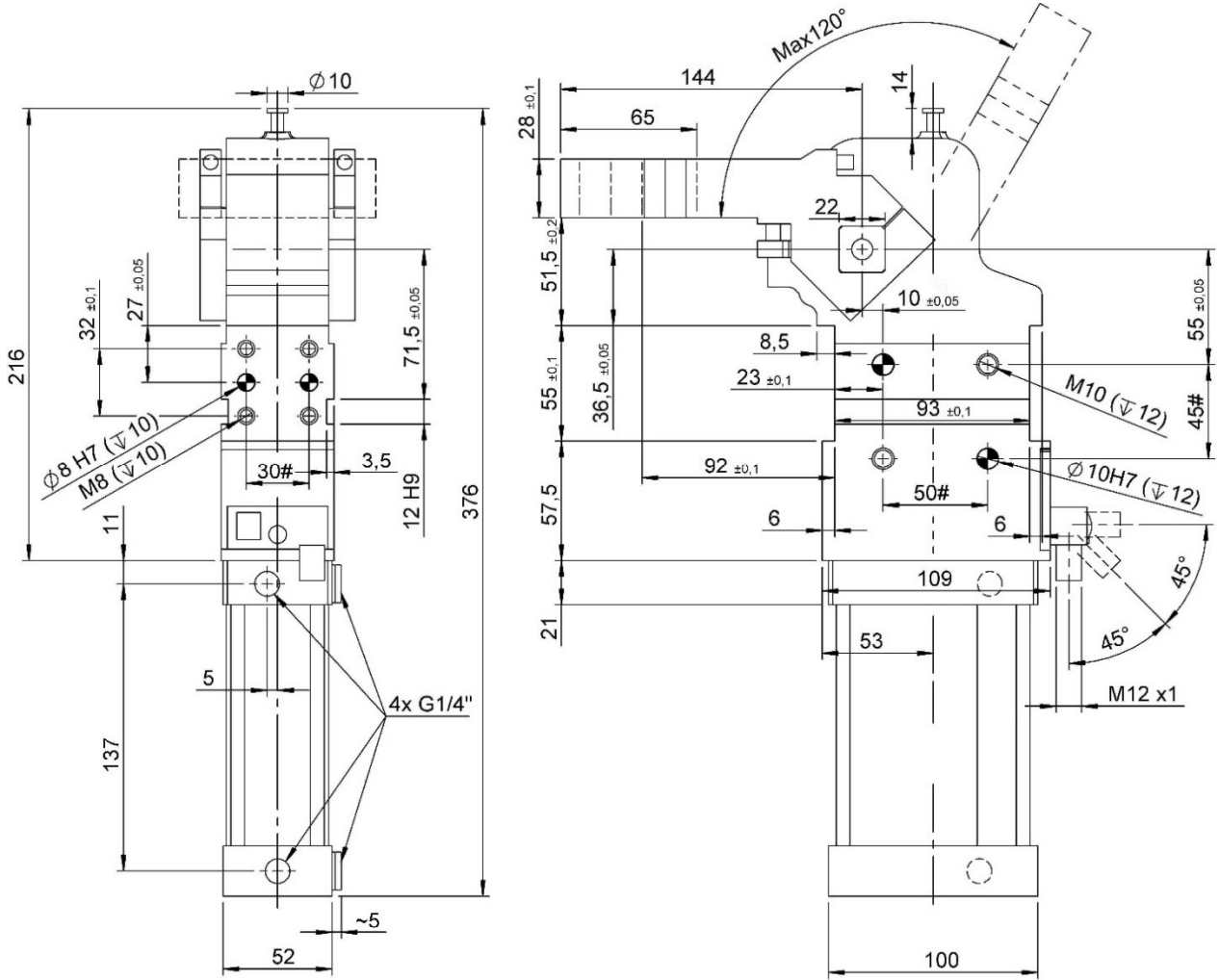
#Tolerances: dowel holes ±0.02, screw holes ±0.1

类型 Type	气缸缸径 Cylinder bore	保持力 Holding moment	重量 Weight	工作气压 Working pressure	最大夹紧扭矩 (5 bar) Clamping max. torque (5 bar)	空气耗气量 (5 bar) Air consumption (5 bar)
	[mm]	[Nm]	[Kg]	[bar]	[Nm]	[l]
CS50-O1...	50	1000	~ 5	2-8	270	~ 1,9



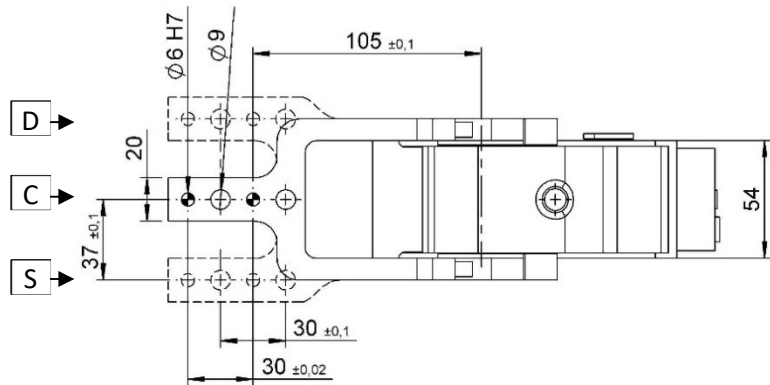
C63-V1...

夹紧气缸, D.63, 打开角度可调, 垂直安装夹臂, 高度 15mm
 Clamp, D.63, Vario Op. Angle, Vertical arm, Offset 15



标准打开角度 = 120°, 打开角度可以做 15° 调整.

Standard opening angle = 120°, it's possible to set a lower angles with steps of 15°.



#公差: 定位销孔 ± 0.02 , 螺纹孔 ± 0.1

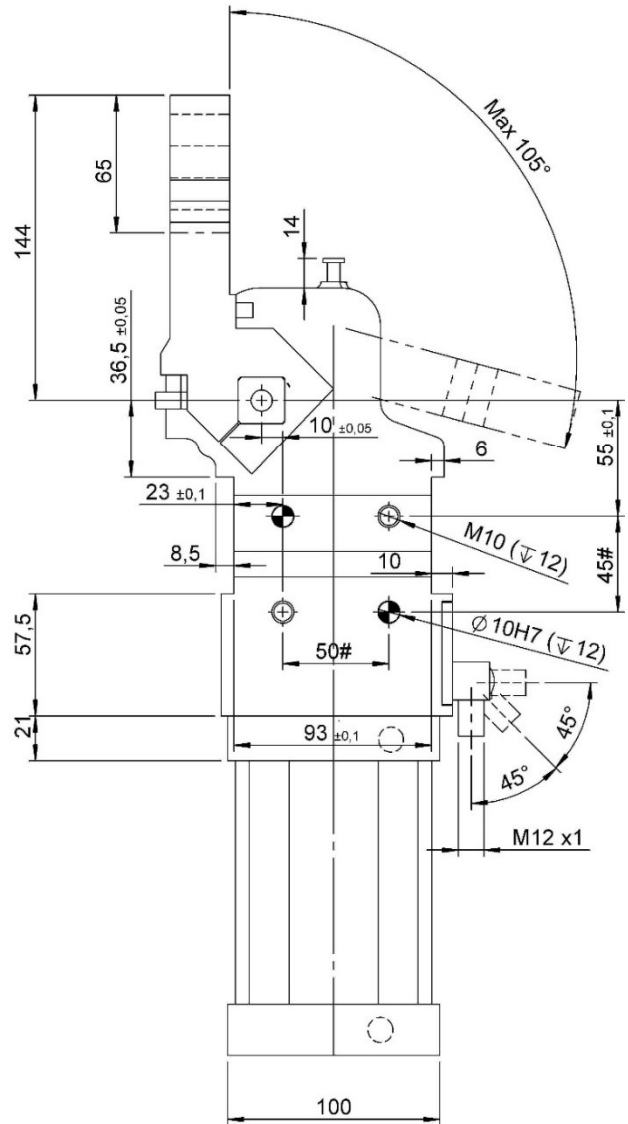
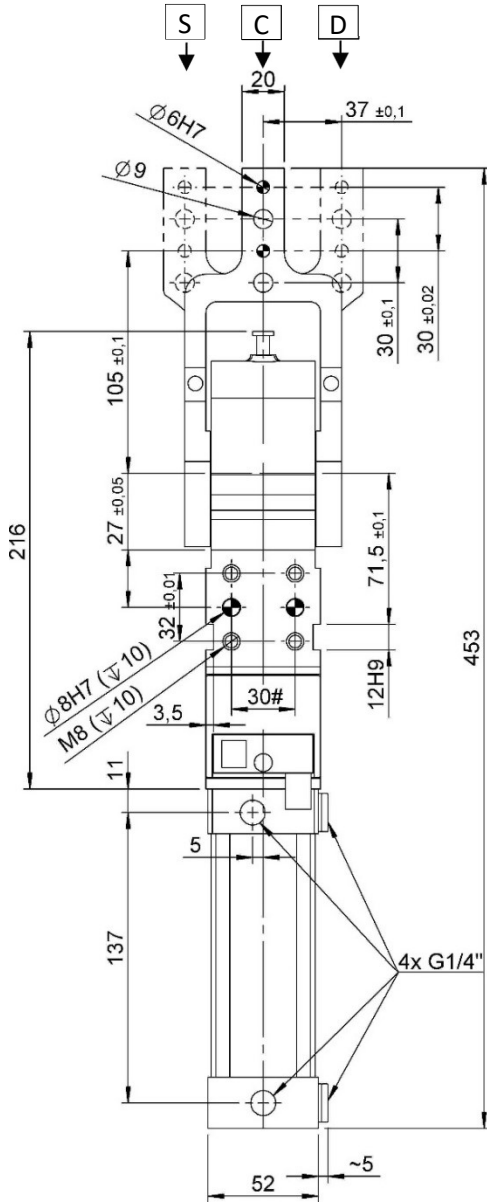
#Tolerances: dowel holes ± 0.02 , screw holes ± 0.1

类型 Type	气缸缸径 Cylinder bore	保持力 Holding moment	重量 Weight	工作压力 Working pressure	最大夹紧扭矩 (5 bar) Clamping max. torque (5 bar)	空气耗气量 (5 bar) Air consumption (5 bar)
	[mm]	[Nm]	[Kg]	[bar]	[Nm]	[l]
C63-V1...	63	1000	~ 5,5	2-8	420	~ 3



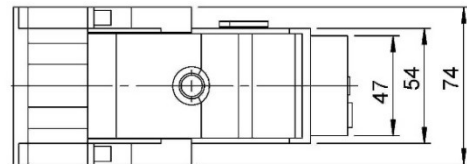
C63-O1...

夹紧气缸, D.63, 打开角度可调, 夹臂水平安装, 高度 15mm
Clamp, D.63, Vario Op. Angle, Horizontal arm, Offset 15



标准打开角度 = 105°, 打开角度可以做 15°调整.

Standard opening angle = 105°, it's possible to set a lower angles with steps of 15°.



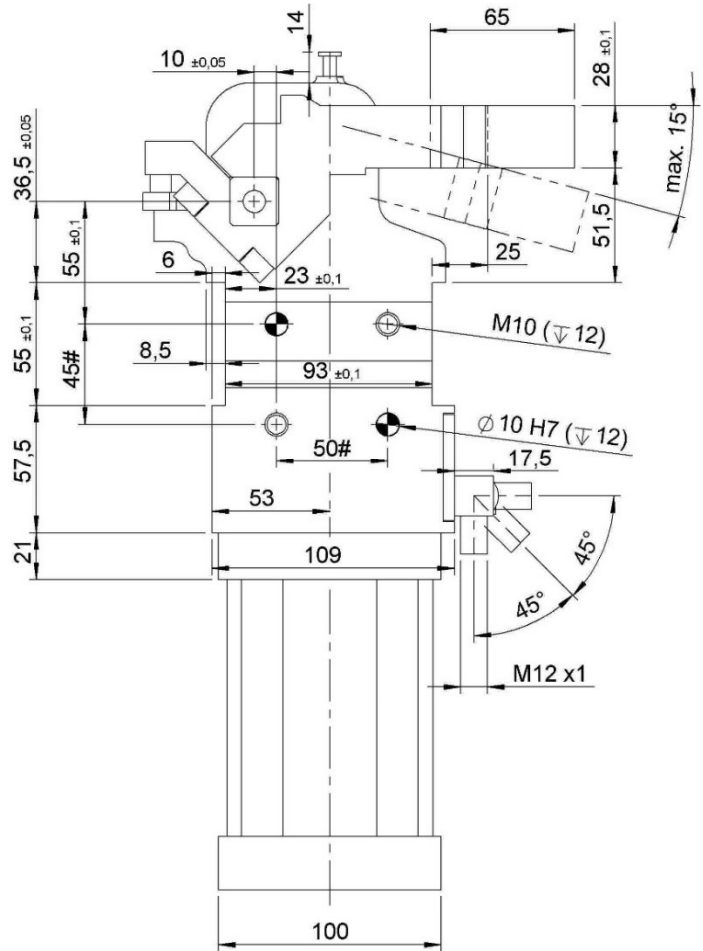
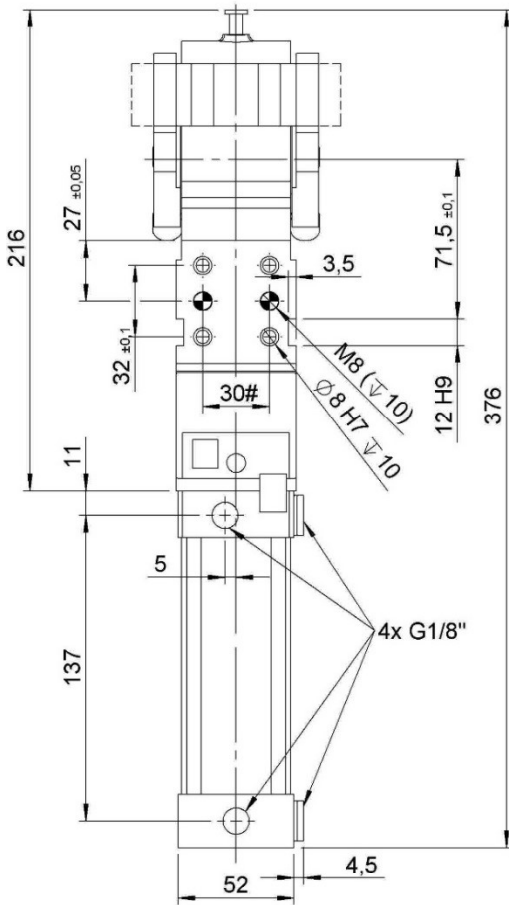
#公差: 定位销孔 ±0.02, 螺纹孔 ±0.1
#Tolerances: dowel holes ±0.02, screw holes ±0.1

类型 Type	气缸缸径 Cylinder bore	保持力 Holding moment	重量 Weight	工作气压 Working pressure	最大夹紧扭矩 (5 bar) Clamping max. torque (5 bar)	空气耗气量 (5 bar) Air consumption (5 bar)
	[mm]	[Nm]	[Kg]	[bar]	[Nm]	[l]
C63-O1...	63	1000	~ 5,5	2 - 8	420	~ 3

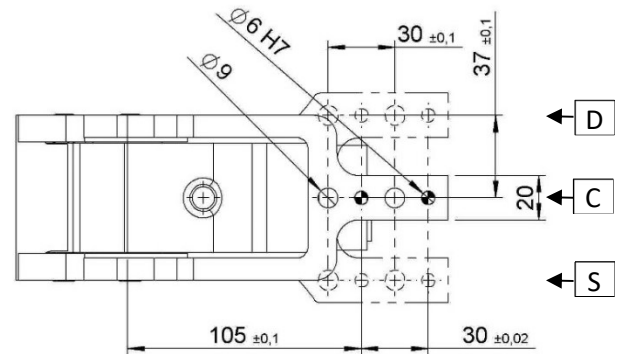


CS63-V1...

夹紧气缸, D.63, 打开角度可调, 夹臂垂直对称安装, 高度 15mm
 Clamp, D.63, Vario Op. Angle, Vertical symmetric arm, Offset 15



固定打开角度 = 15°.
 Fixed opening angle = 15°.



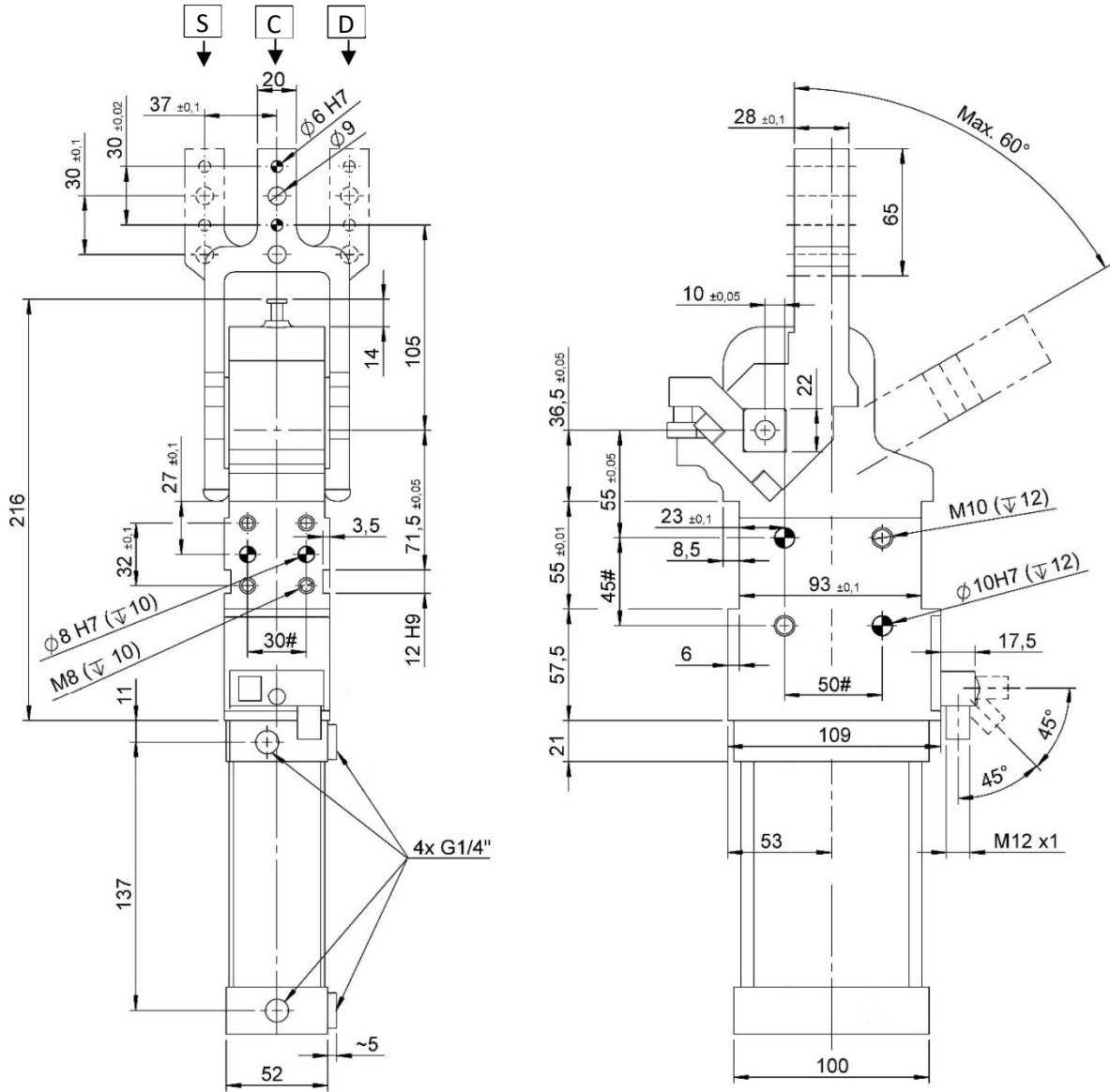
#公差: 定位销孔 ±0.02, 螺纹孔 ±0.1
 #Tolerances: dowel holes ±0.02, screw holes ±0.1

类型 Type	气缸缸径 Cylinder bore	保持力 Holding moment	重量 Weight	工作气压 Working pressure	最大夹紧扭矩 (5 bar) Clamping max. torque (5 bar)	空气耗气量 (5 bar) Air consumption (5 bar)
	[mm]	[Nm]	[Kg]	[bar]	[Nm]	[l]
CS63-V1...	63	1000	~ 5,5	2-8	420	~ 3



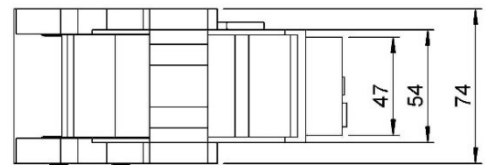
CS63-O1...

夹紧气缸, D.63, 打开角度可调, 夹臂水平对称安装, 高度 15mm
 Clamp, D.63, Vario Op. Angle, Horizontal symmetric arm, Offset 15



标准打开角度 = 60°, 打开角度可做 15° 调整。

Standard opening angle = 60°, it's possible to set a lower angles with steps of 15°.



#公差: 定位销孔 ±0.02, 螺纹孔 ±0.1

#Tolerances: dowel holes ±0.02, screw holes ±0.1

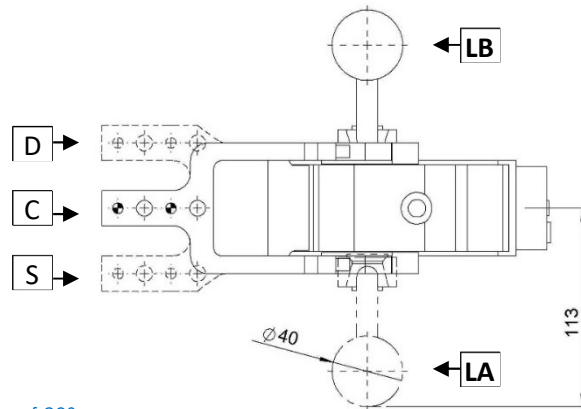
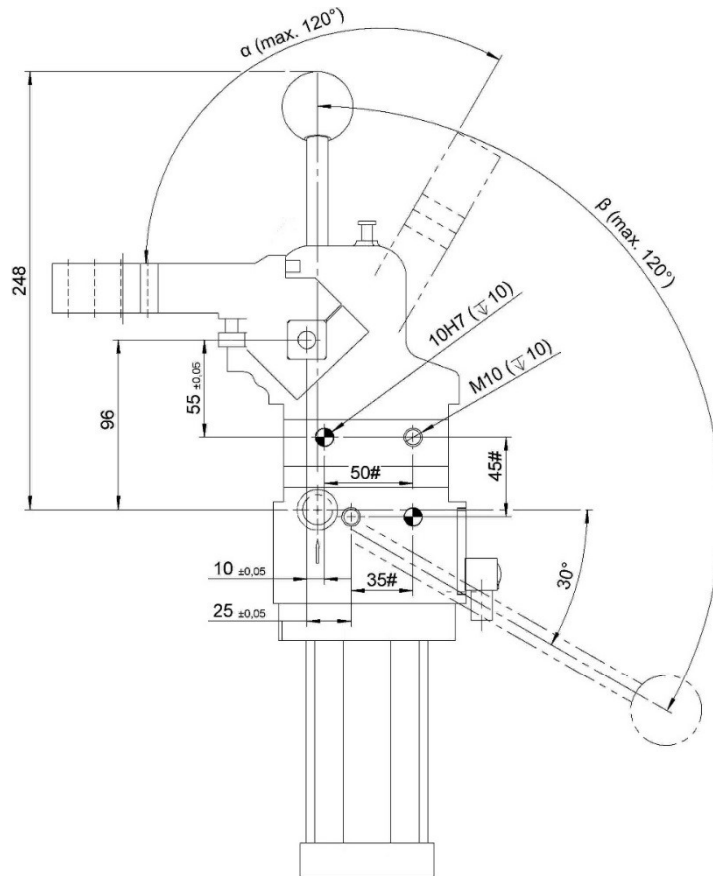
类型 Type	气缸缸径 Cylinder bore	保持力 Holding moment	重量 Weight	工作气压 Working pressure	最大夹紧扭矩 (5 bar) Clamping max. torque (5 bar)	空气耗气量 (5 bar) Air consumption (5 bar)
	[mm]	[Nm]	[Kg]	[bar]	[Nm]	[l]
CS63-O1...	63	1000	~ 5,5	2 - 8	420	~ 3



CM50L-V1... / CM63L-V1...

夹紧气缸, D.50/63, 打开角度可调, 带手动机构, 夹臂垂直安装, 高度 15mm

Clamp, D.50/63, Vario Op. Angle, Hand Lever, Vert. arm, Offset 15



手动机构每 20° 一调节

Manual control adjustable in steps of 20°

α	15°	30°	45°	60°	75°	90°	105°	120°
β	37°	48°	58°	68°	78°	90°	103°	120°

#公差: 定位销孔 ±0.02, 螺纹孔 ±0.1

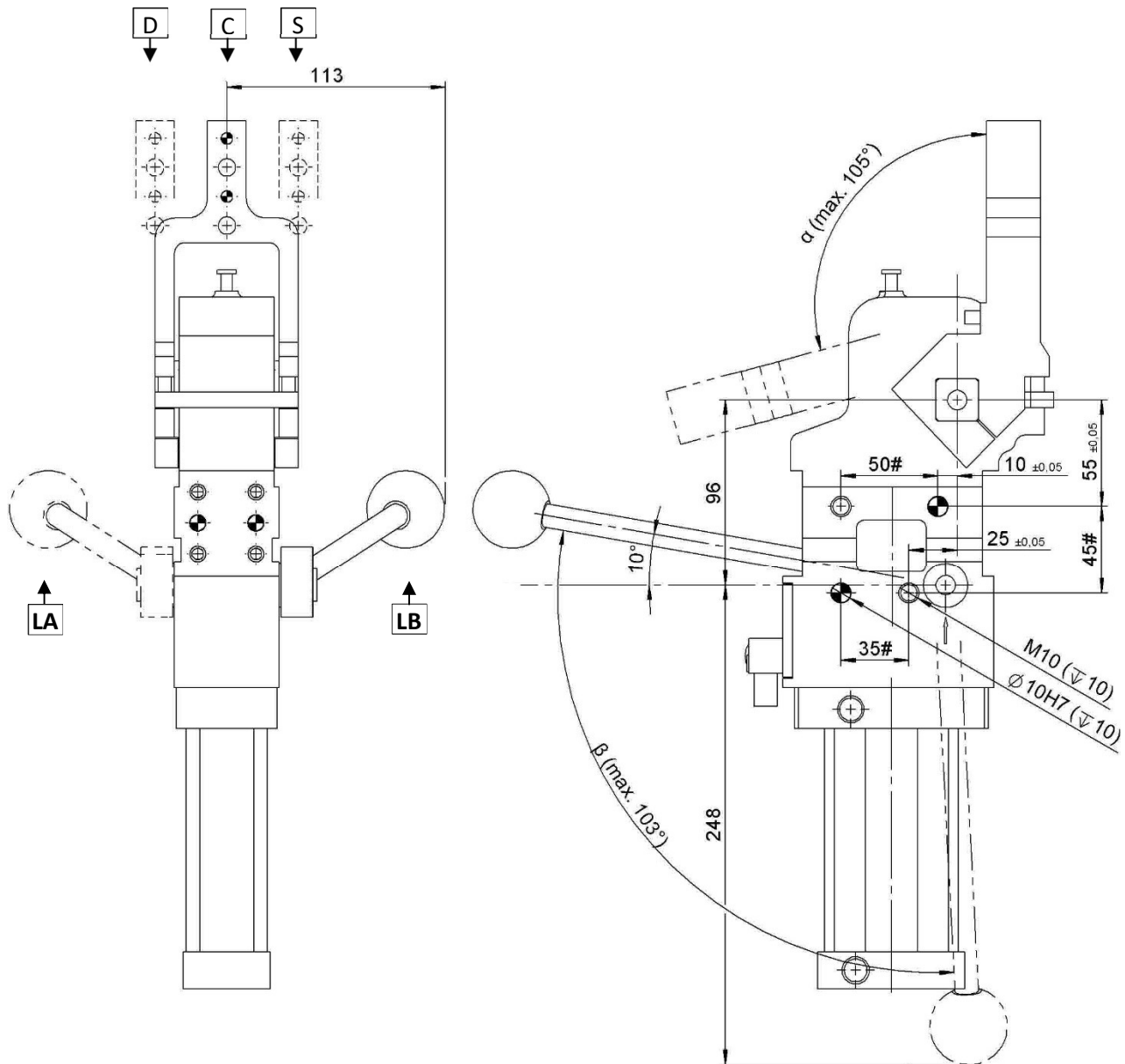
#Tolerances: dowel holes ±0.02, screw holes ±0.1

类型 Type	气缸缸径 Cylinder bore	保持力 Holding moment	重量 Weight	工作气压 Working pressure	最大夹紧扭矩 (5 bar) Clamping max. torque (5 bar)
	[mm]	[Nm]	[Kg]	[bar]	[N]
CM50 L .. V1	50	1000	~ 5,5	2 - 8	200
CM63 L .. V1	63		~ 6,0		



CM50L-O1... / CM63L-O1...

夹紧气缸, D.50/63, 打开角度可调, 带手机构, 夹臂高度 15mm
 Clamp, D.50/63, Vario Op. Angle, Hand Lever, Horiz. Arm, Offset 15



手机构每 20° 一调节

Manual control adjustable in steps of 20°

α	15°	30°	45°	60°	75°	90°	105°
β	37°	48°	58°	68°	78°	90°	103°

#公差: 定位销孔 ± 0.02 , 螺纹孔 ± 0.1

#Tolerances: dowel holes ± 0.02 , screw holes ± 0.1

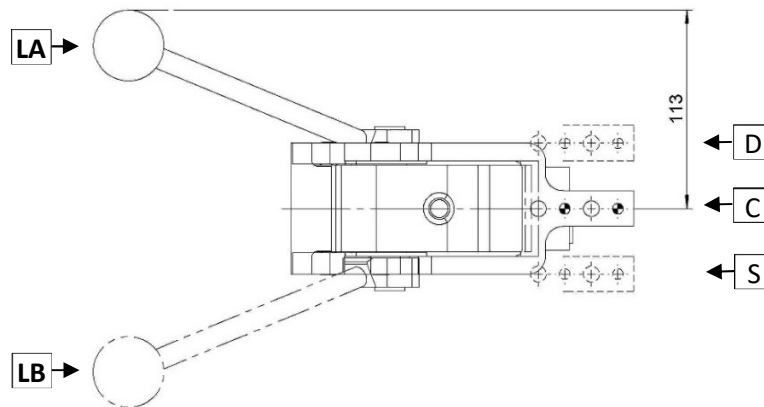
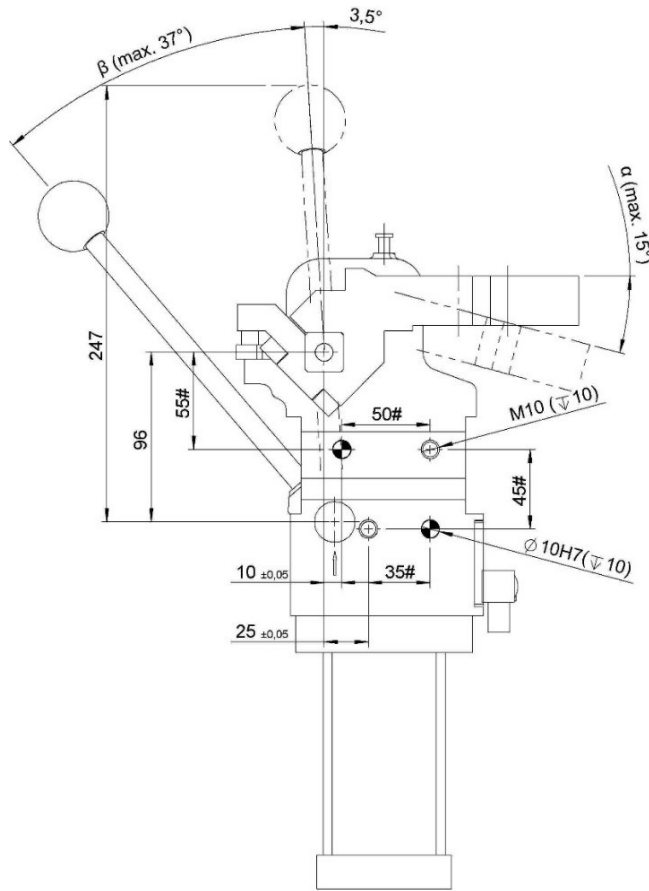
类型 Type	气缸缸径 Cylinder bore	保持力 Holding moment	重量 Weight	工作气压 Working pressure	最大夹紧扭矩 (5 bar) Clamping max. torque (5 bar)
	[mm]	[Nm]	[Kg]	[bar]	[N]
CM50 L .. O1	50	1000	~ 5,5	2 - 8	200
CM63 L .. O1	63		~ 6,0		



CSM50L-V1... / CSM63L-V1...

夹紧气缸, D.50/63, 打开角度可调, 带手动机构, 夹臂垂直对称安装, 高度 15mm

Clamp, D.50/63, Vario Op. Angle, Hand Lever, Vert. Sym., Offset 15



α	15°
β	37°

#公差: 定位销孔 ± 0.02 , 螺纹孔 ± 0.1

#Tolerances: dowel holes ± 0.02 , screw holes ± 0.1

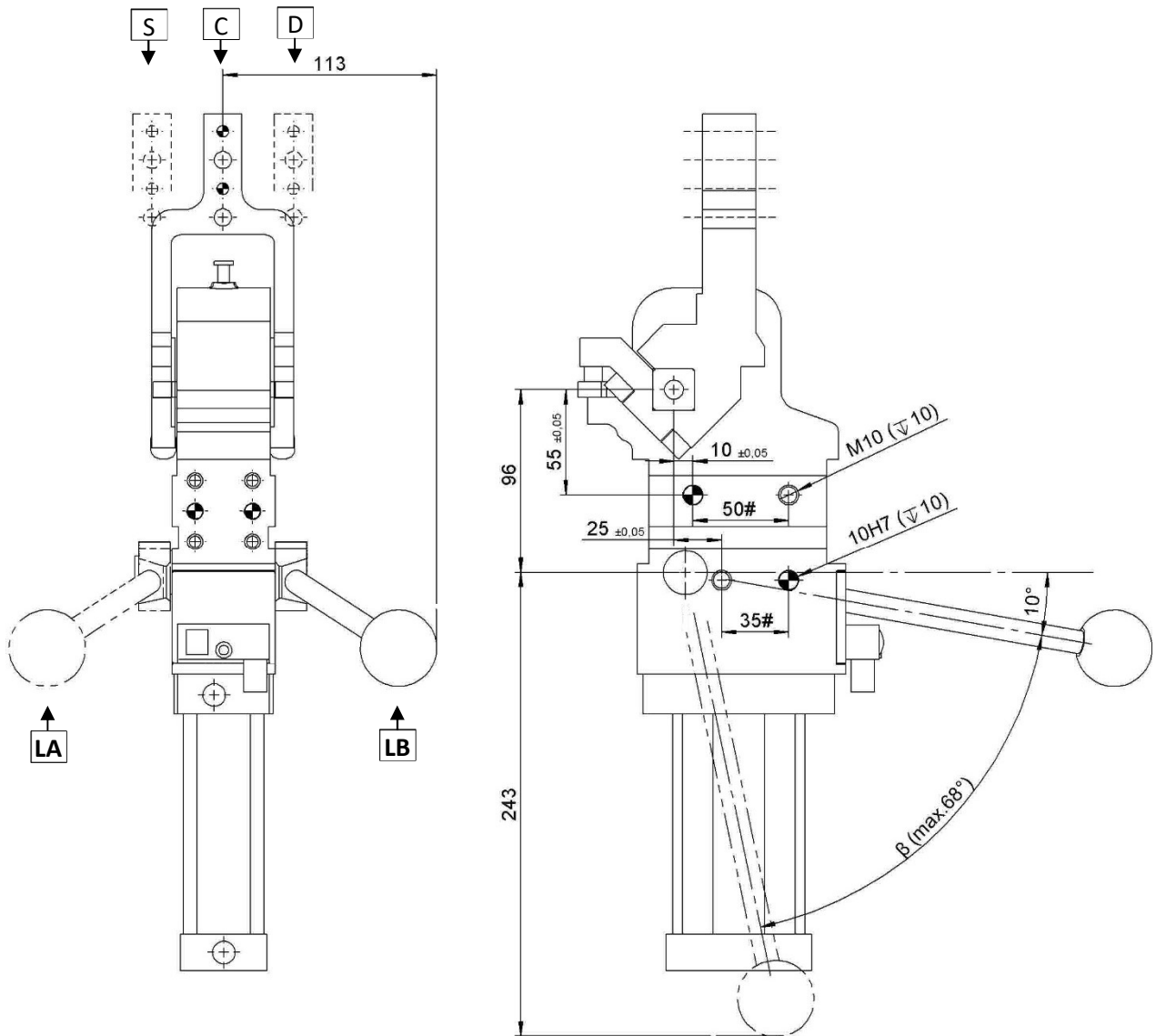
类型 Type	气缸缸径 Cylinder bore	保持力 Holding moment	重量 Weight	工作气压 Working pressure	最大夹紧扭矩 (5 bar) Clamping max. torque (5 bar)
	[mm]	[Nm]	[Kg]	[bar]	[N]
CSM50 L .. V1	50	1000	~ 5,5	2 - 8	200
CSM63 L .. V1	63		~ 6,0		



CSM50L-O1... / CSM63L-O1...

夹紧气缸, D.50/63, 打开角度可调, 带手动机构, 夹臂水平对称安装, 高度 15mm

Clamp, D.50/63, Vario Op. Angle, Hand Lever, Horiz. Sym., Offset 15



手动机构每 20° 一调节

Manual control adjustable in steps of 20°

α	15°	30°	45°	60°
β	37°	48°	58°	68°

#公差: 定位销孔 ±0.02, 螺纹孔 ±0.1

#Tolerances: dowel holes ±0.02, screw holes ±0.1

类型 Type	气缸缸径 Cylinder bore	保持力 Holding moment	重量 Weight	工作气压 Working pressure	最大夹紧扭矩 (5 bar) Clamping max. torque (5 bar)
	[mm]	[Nm]	[Kg]	[bar]	[N]
CSM50 L .. O1	50	1000	~ 5,5	2 - 8	200
CSM63 L .. O1	63		~ 6,0		

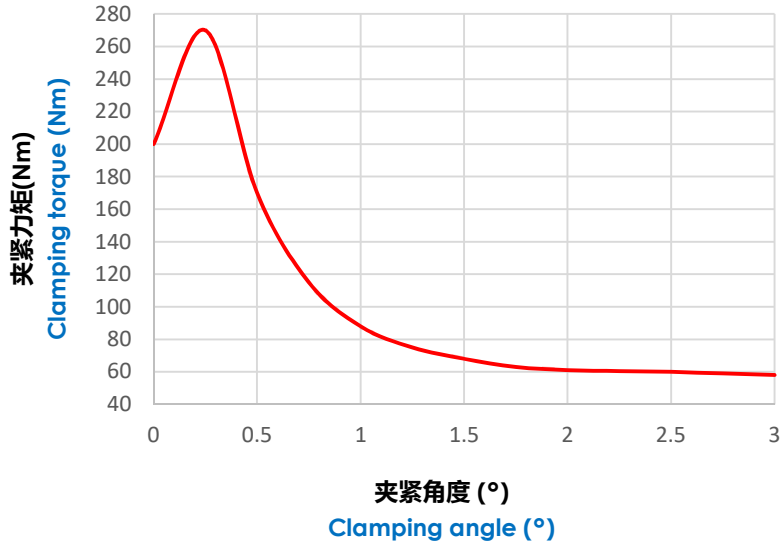


图表 CPR50.

Diagrams CPR50.

夹紧力矩 (Nm)

Clamping torque (Nm)

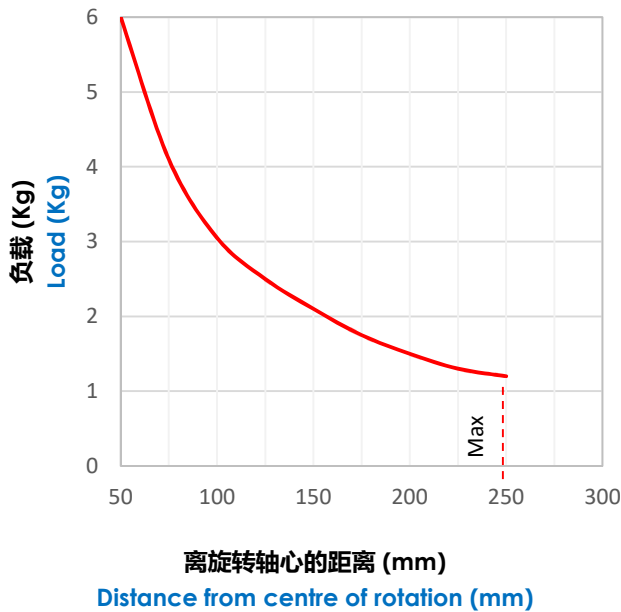


最大夹紧扭矩 (5 bar): **270 Nm.**

Max. clamping torque (5 bar): **270 Nm.**

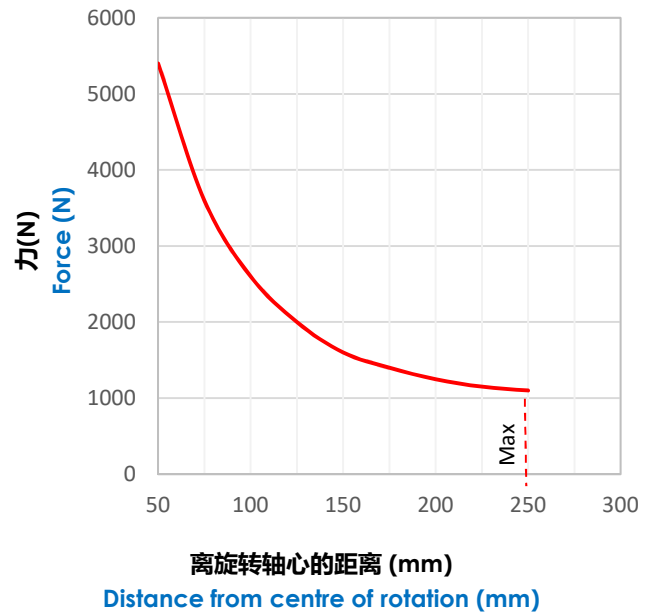
夹臂最大负载 (Kg).

Max. load applicable on the arm (Kg).



最大作用力 (N).

Max. force applied (N).



最大重力扭矩 (5 bar): **3 Nm.**

Max. torque by weight (5 bar): **3 Nm.**

最大偏心扭矩 **2.5 Nm.**

The max. load by torque for the applications with block out of axis is **2.5 Nm.**

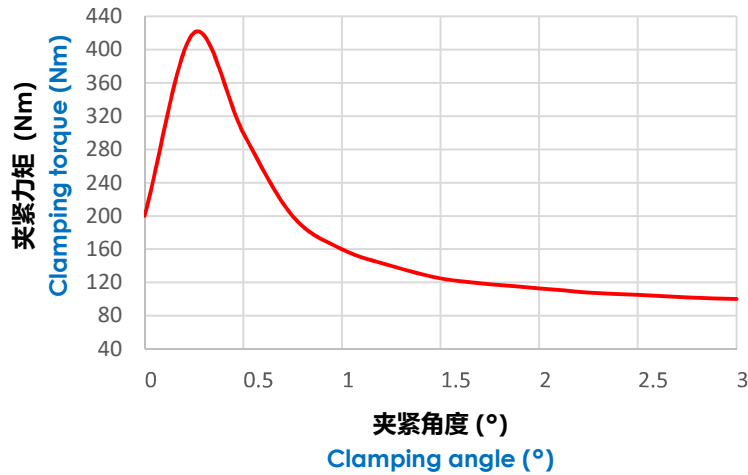


图表 CPR63.

Diagrams CPR63.

夹紧力矩 (Nm)

Clamping torque (Nm)

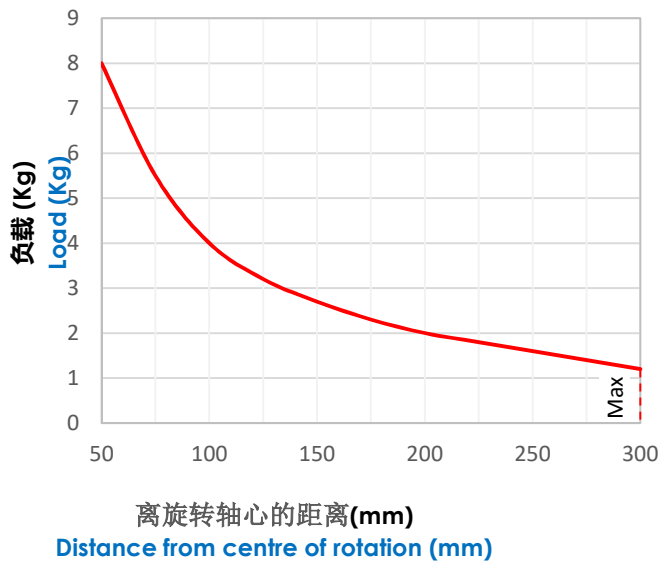


最大夹紧力矩 (5 bar): **420 Nm.**

Max. clamping torque (5 bar): **420 Nm.**

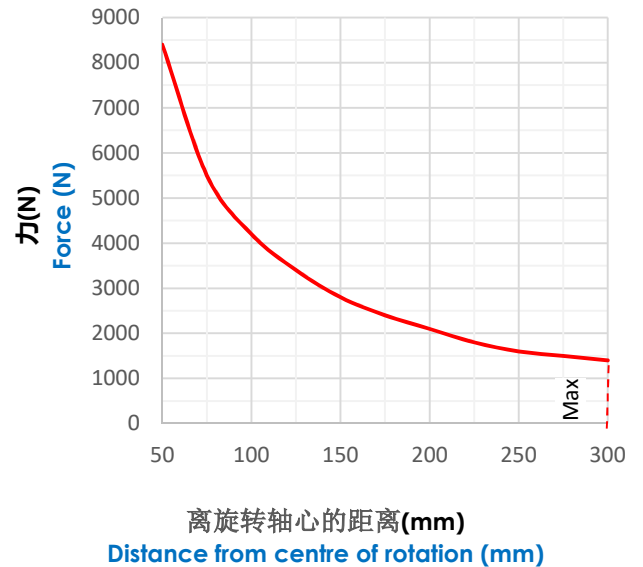
最大夹臂负载 (Kg)

Max. load applicable on the arm (Kg)



最大作用力(N)

Max. force applied (N).



最大重力扭矩 (5 bar): **4 Nm.**

Max. torque by weight (5 bar): **4 Nm**

最大偏心扭矩 **3 Nm**

The max. load by torque for the applications with block out of axis is **3 Nm**



操作说明.

Operating instructions.

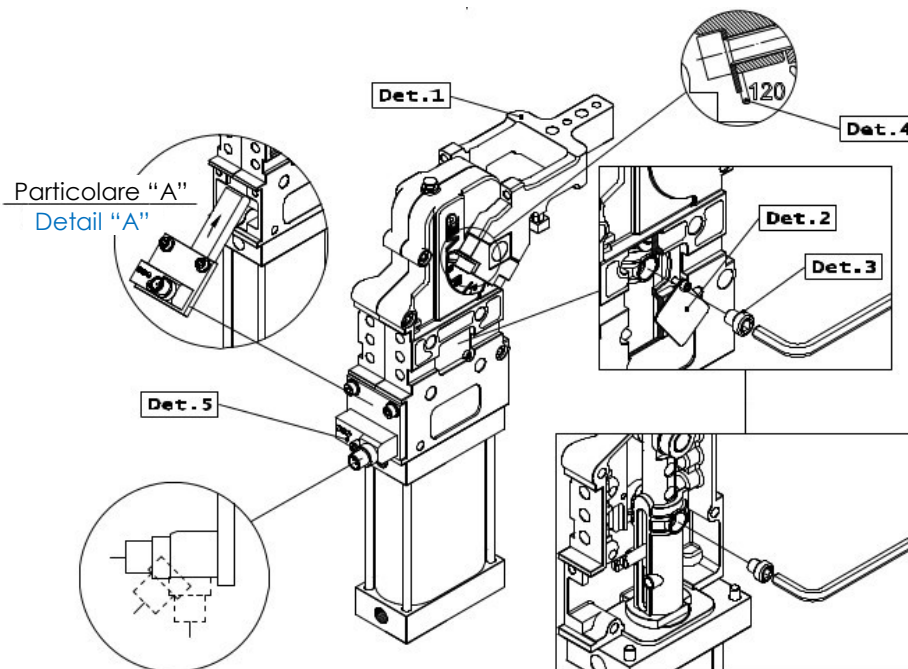
调整打开角度

- 让夹臂处于打开状态 (Det.1) ;
 - 卸下角度调节处的(Det.3)螺丝, 移除保护板 (Det.2) ;
 - 对照缸体上的刻度移动夹臂到需要的角度 (Det.4) ;
 - 拧紧螺丝 (夹紧力矩=30Nm) 并重新安装好角度调节处的保护板
- 备注:角度调小在左边调节, 角度调大在右边调节。电感式接近开关 (Det.5) 是自动的, 无需调整。

Opening angle change.

- Set the lever (Det.1) in opening position,
- Remove the protection (Det.2) from the angle adjustment compartment and unscrew the threaded pin (Det.3);
- Move the clamping arm (Det.4) to the required angular position referring to the angle indicator (Det.4);
- Tighten the threaded pin (clamping torque = 30 Nm) and refit the protection inside the compartment

NOTE: to adjust even angles operate on the left side and for add angles operate on the right side; The setting of the inductive sensor switch (Det.5) is automatic and doesn't require any operation.



接近开关安装

- 打开夹臂到打开位置 (最小角度 60°);
调节打开角度低于 60° 的气缸先拧下角度调节螺丝 (Det.3);
- 插入接近开关并拧上 2 个 M5 的螺丝 (Detail "A")。 .
如前面设置介绍, 接近开关是自动调节的, 无需其他操作。 (Det.5) .

Inductive sensor assembly

- Set the lever (Det.1) in opening position (min. 60°);
For regulated clamps with opening angle less than 60° unscrew the angle adjustment pin (Det.3),
- Insert the inductive sensor (Detail "A") screwing 2 M5 screws.

As view before the setting of inductive sensor (Det.5) is automatic and doesn't require any operation.

手柄位置调整.

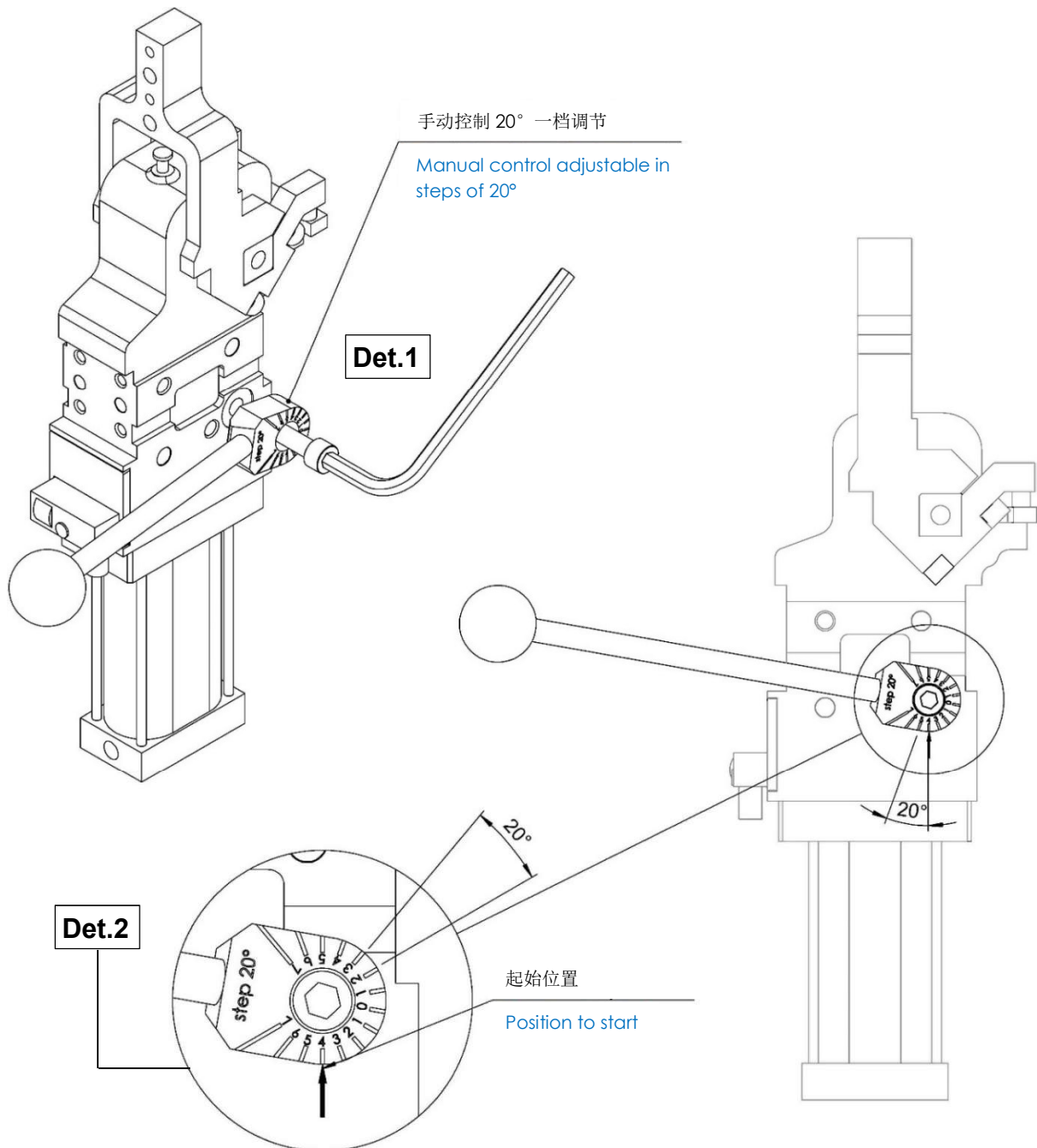
- 确保装置在安全状态;
- 插入扳手拧下螺丝 (Det.1);



- 根据缸体上刻度转动手柄到需要的角度位置(Det.2);
- 拧紧螺丝.

Position change hand lever.

- Set the device in security;
- Unscrew the threaded pin with insert Keys and imprint from 8 mm (Det.1);
- Move the hand lever to the required angular position referring to the angle indicator (Det.2);
- Tighten the threaded pin.

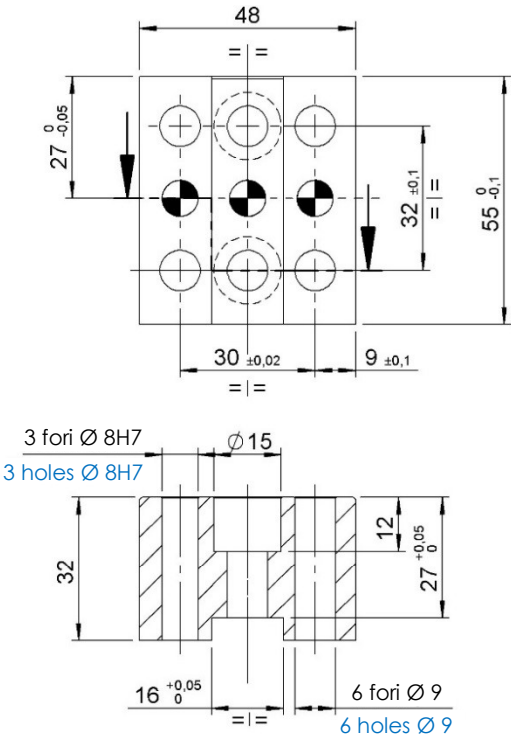
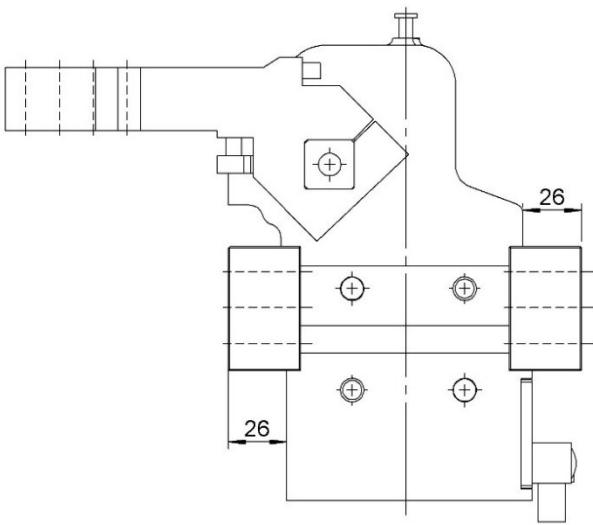




限位模块.

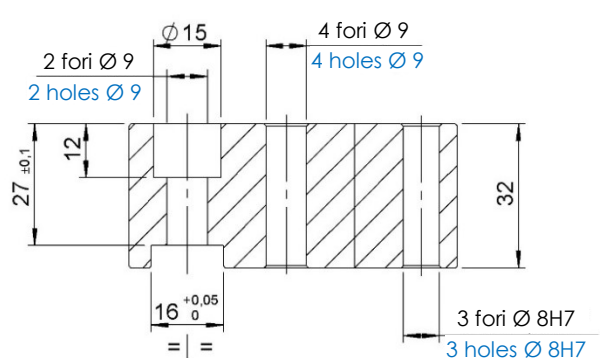
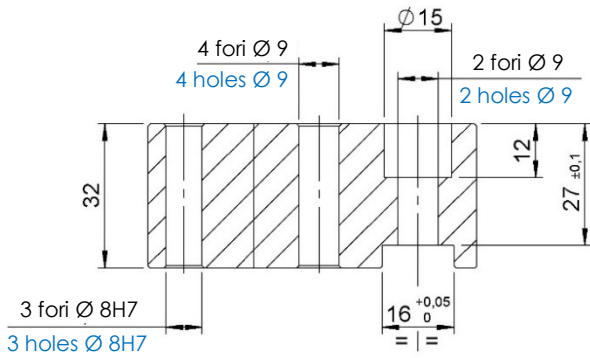
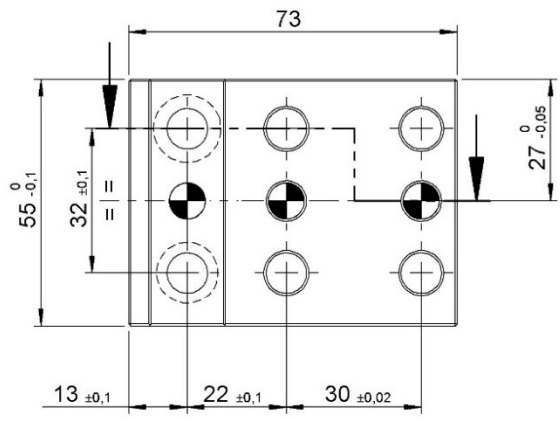
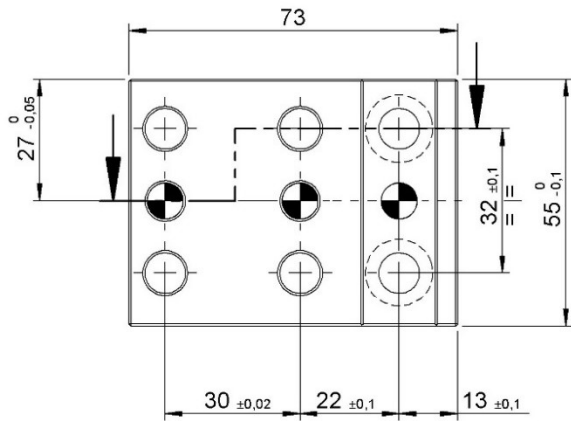
Fixing blocks.

Cod. 04402



Cod. 05777

Cod. 05778





防掉落机构

Lever latching group.

防掉落机构（解析图“A”）安装在气缸侧面，确保夹臂在打开时万一断气的情况下，安装了防掉落机构不会因惯性回落。
备注：禁止超过手柄可承受的最大力矩。

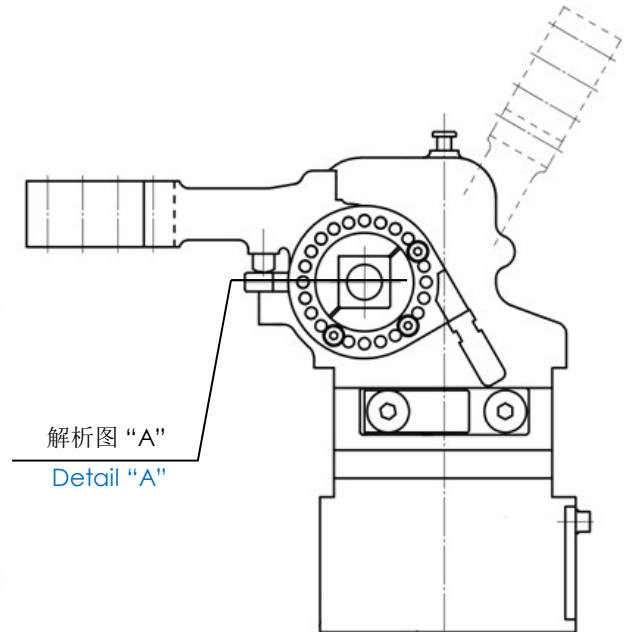
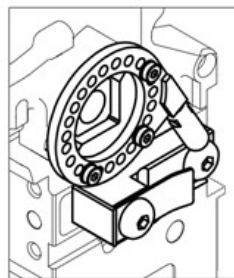
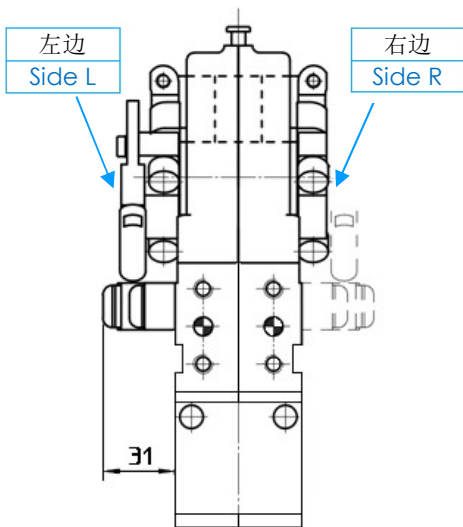
This device (detail "A") applied on the side of the clamp ensure, during the lever opening and when there isn't air in the pneumatic circuit, that the applied clamping block doesn't fall due to inertia.

(NOTE: Not exceed the max. load torques applicable to the lever).

订货举例.

Ordering example.

C	AL45	-	-	D
<div style="border: 1px solid #0070C0; padding: 5px;"> <p>气缸夹臂打开角度。 Opening angle of clamping arm</p> </div>		<div style="border: 1px solid #0070C0; padding: 5px;"> <p>防掉落机构安装方位区别： Side where apply the device:</p> <p>D = 右边 right side</p> <p>S = 左边 left side</p> </div>		





备件.

Spare parts.

# 配套元件	图片 Picture	描述 Description	代号 Code
夹臂组装 Arm assembly		夹臂类型 V1C 和 O1C Arm type V1C and O1C	05625/C
		夹臂类型 V1D 和 O1S Arm type V1D and O1S	05625/DX/C
		夹臂类型 V1S 和 O1D Arm type V1S and O1D	05625/SX/C
		夹臂类型 V1CS 和 O1CS Arm type V1CS and O1CS	05625/CPRS/C
		夹臂类型 V1SS 和 O1DS Arm type V1SS and O1DS	05625/SX/CPRS/C
		夹臂类型 V1DS 和 O1SS Arm type V1DS and O1SS	05625/DX/CPRS/C
接近开关 Proximity switch		P+F 电感式接近开关 Inductive proximity switch P+F	05688
密封套装 Seals kit		密封组合用于气缸 CPR50 Seal components for pneumatic cylinder CPR50	SCR-CIL50V
密封套装 Seals kit		密封组合用于气缸 CPR63 Seal components for pneumatic cylinder CPR63	SCR-CIL63V
气缸 Pneumatic cylinder		完整气缸缸径50mm Complete pneumatic cylinder bore 50 mm	05841/C
气缸 Pneumatic cylinder		完整气缸缸径63mm Complete pneumatic cylinder bore 63 mm	05842/C
手柄 Manual control lever		手柄手动控制气缸 CM... Lever manual control pneumatic clamp CM...	07078/C

